



Agricultural Marketing Service
U.S. DEPARTMENT OF AGRICULTURE



AMS

Creating Opportunities for
American Farms &
Businesses



Agricultural Marketing Service
U.S. DEPARTMENT OF AGRICULTURE



Ron Batchner, AIA





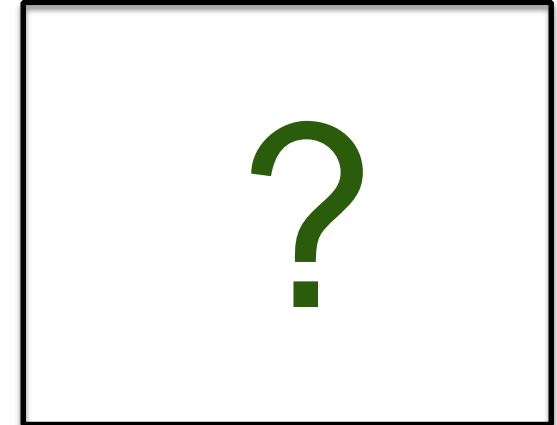
Wholesale Markets and Facility Design



Philadelphia Pre-1955



Philadelphia 2018



Future Markets

Agricultural Marketing Act of 1946

§1621. Congressional declaration of purpose; use of existing facilities; cooperation with States

The Congress declares that a sound, efficient, and privately operated system for distributing and marketing agricultural products is essential to a prosperous agriculture and is indispensable to the maintenance of full employment and to the welfare, prosperity, and health of the Nation...

Local and Regional Foods Division (LRFD) Branches

- **Research:** Explore common challenges that local and regional food system stakeholders face by providing research and data that supports market access and transparency.
- **Outreach & Technical Assistance:** Works with USDA agencies and external partners to share challenges and opportunities related to market access and development in the local and regional food system community.
- **Regional Food Business Centers:** Establishing Regional Centers that will provide coordination, technical assistance, and capacity building support to small and midsize food and farm businesses, with a focus on processing, distribution and aggregation, and market access challenges.



Agricultural Marketing Service
U.S. DEPARTMENT OF AGRICULTURE





Agricultural Marketing Service
U.S. DEPARTMENT OF AGRICULTURE

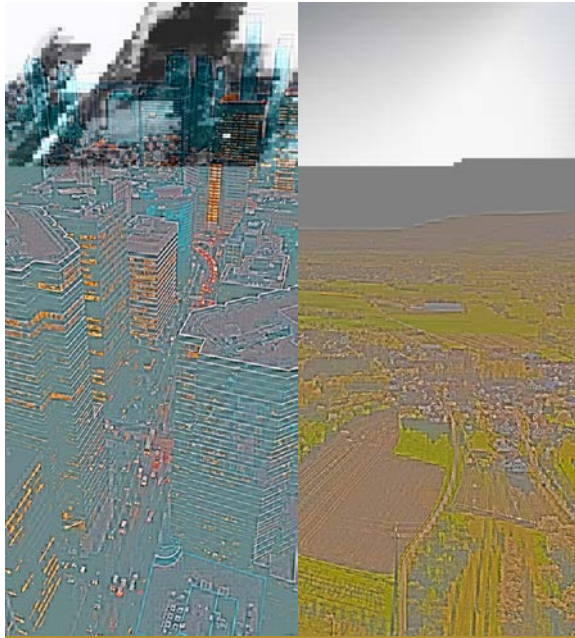


Getting Started

The USDA Wholesale Markets and Facility Design program can assist markets with many of their architectural design needs.

Initial Kick-off Meeting

Some things we will talk about...



SITE SELECTION



CONSTRUCTION TYPE



GOALS



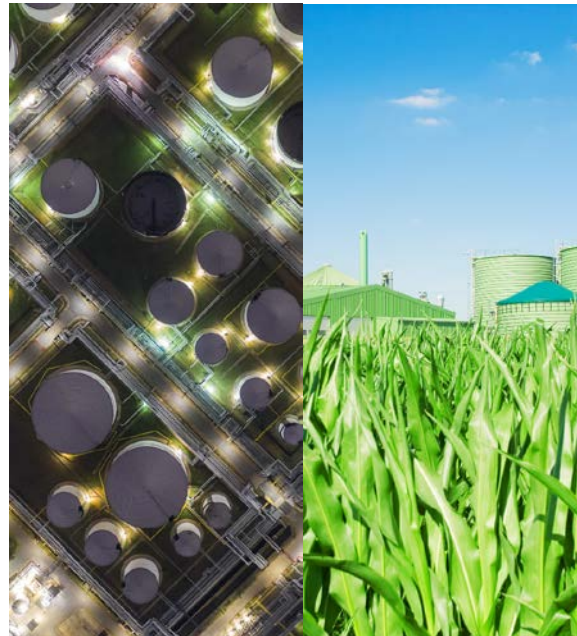
TIMELINE

Programming

Some things we will talk about...



TYPE OF FACILITY



WHAT ARE THE RESTRICTIONS?



WHO ARE YOU SERVING?



WISHLIST

Design

Services include:

- Site selection (space planning, layout, etc.);
- Initial design concept (sketches, programming, floor plans, elevations, etc.);
- 3D Renderings;
- Coordination with local design professionals as a non-contracted third party;
- Review of environmental issues/impacts;
- and building cost study

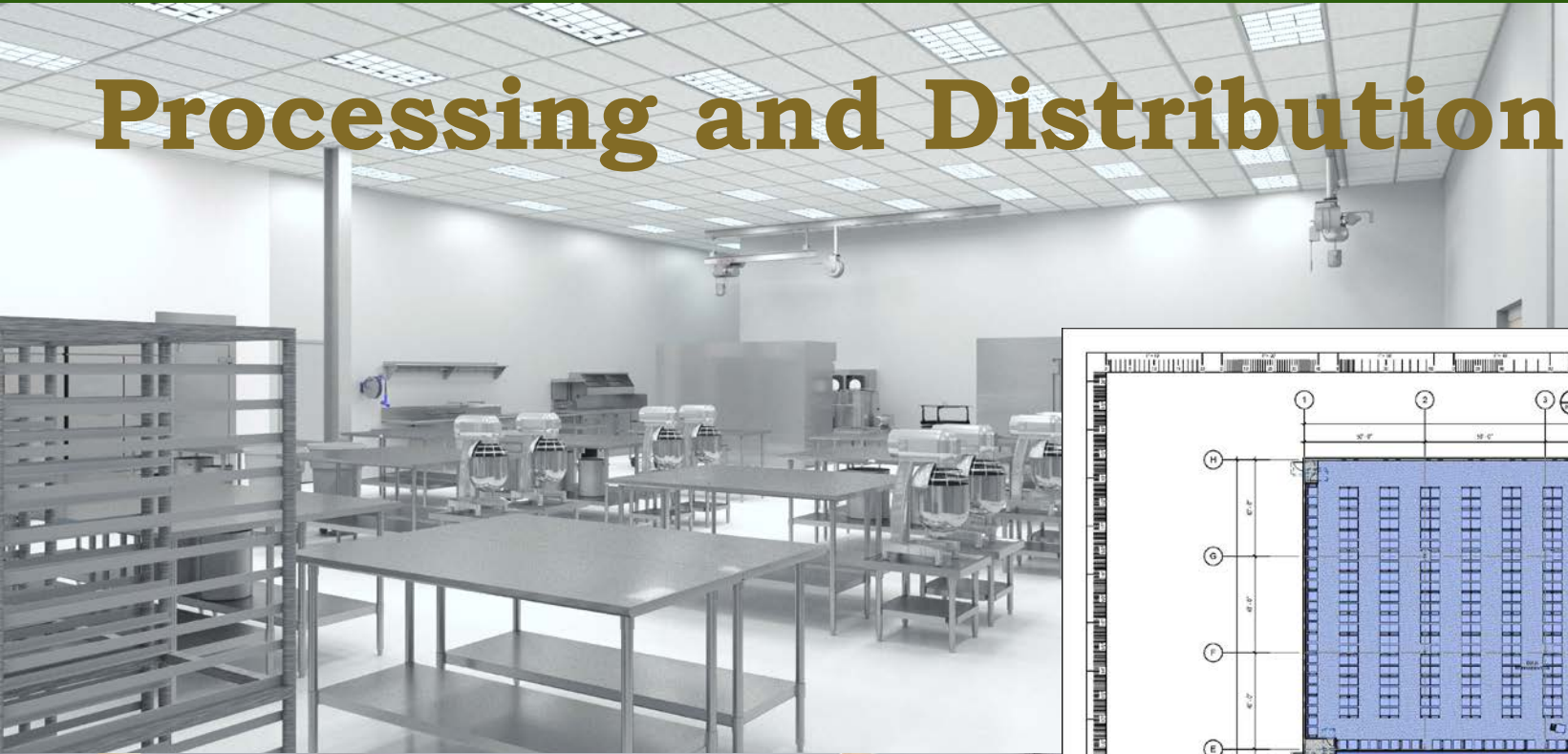




Project Examples

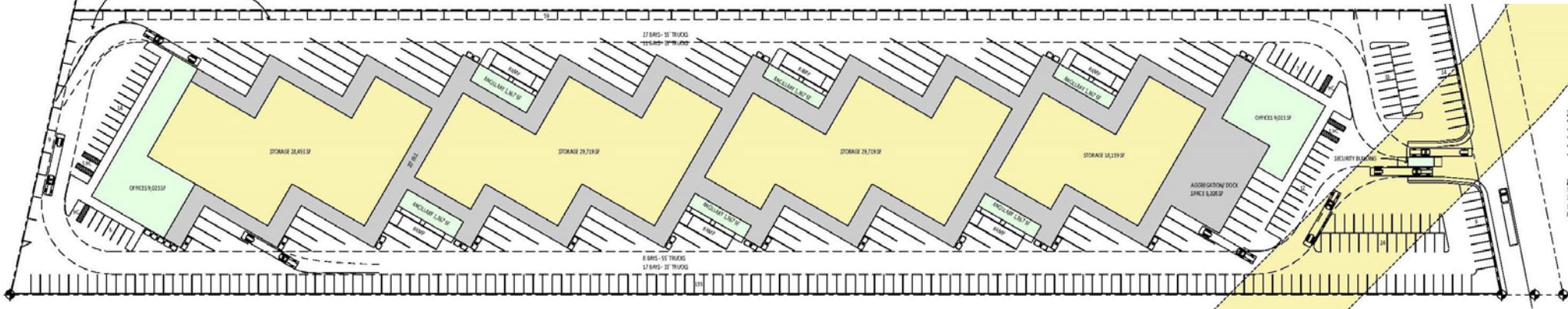
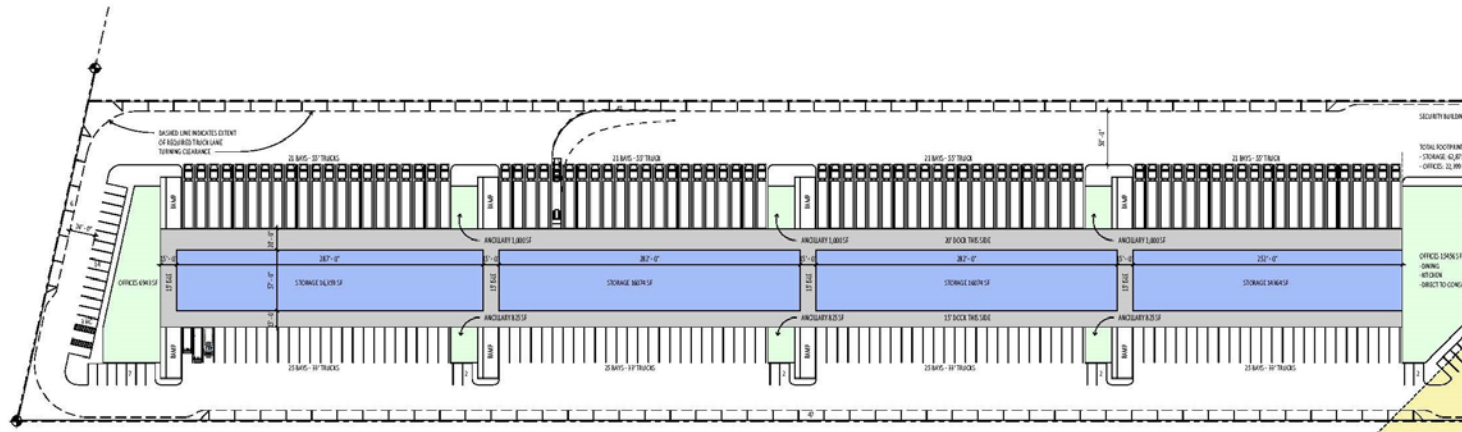
The USDA Wholesale Markets and Facility Design program can assist markets with many of their architectural design needs.

Processing and Distribution

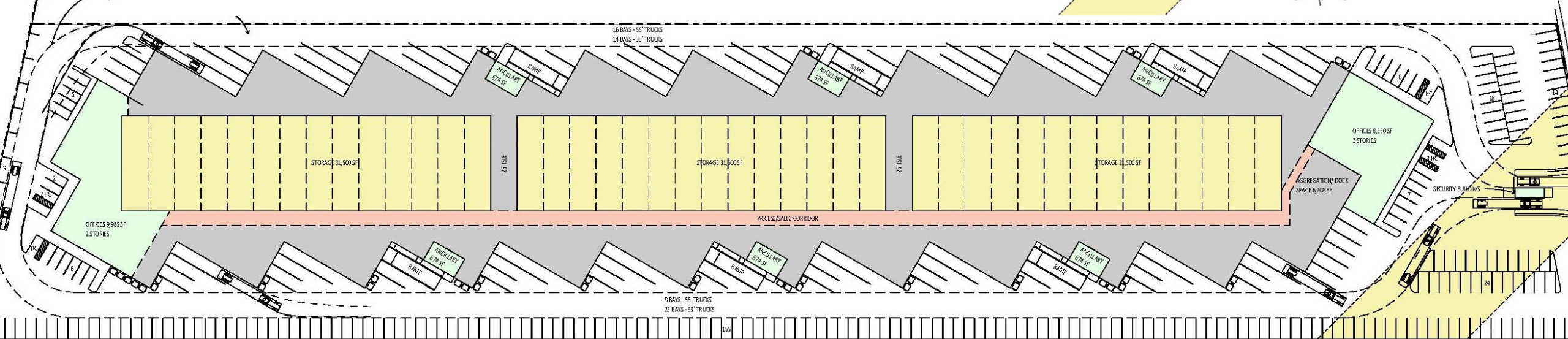




Terminal Market



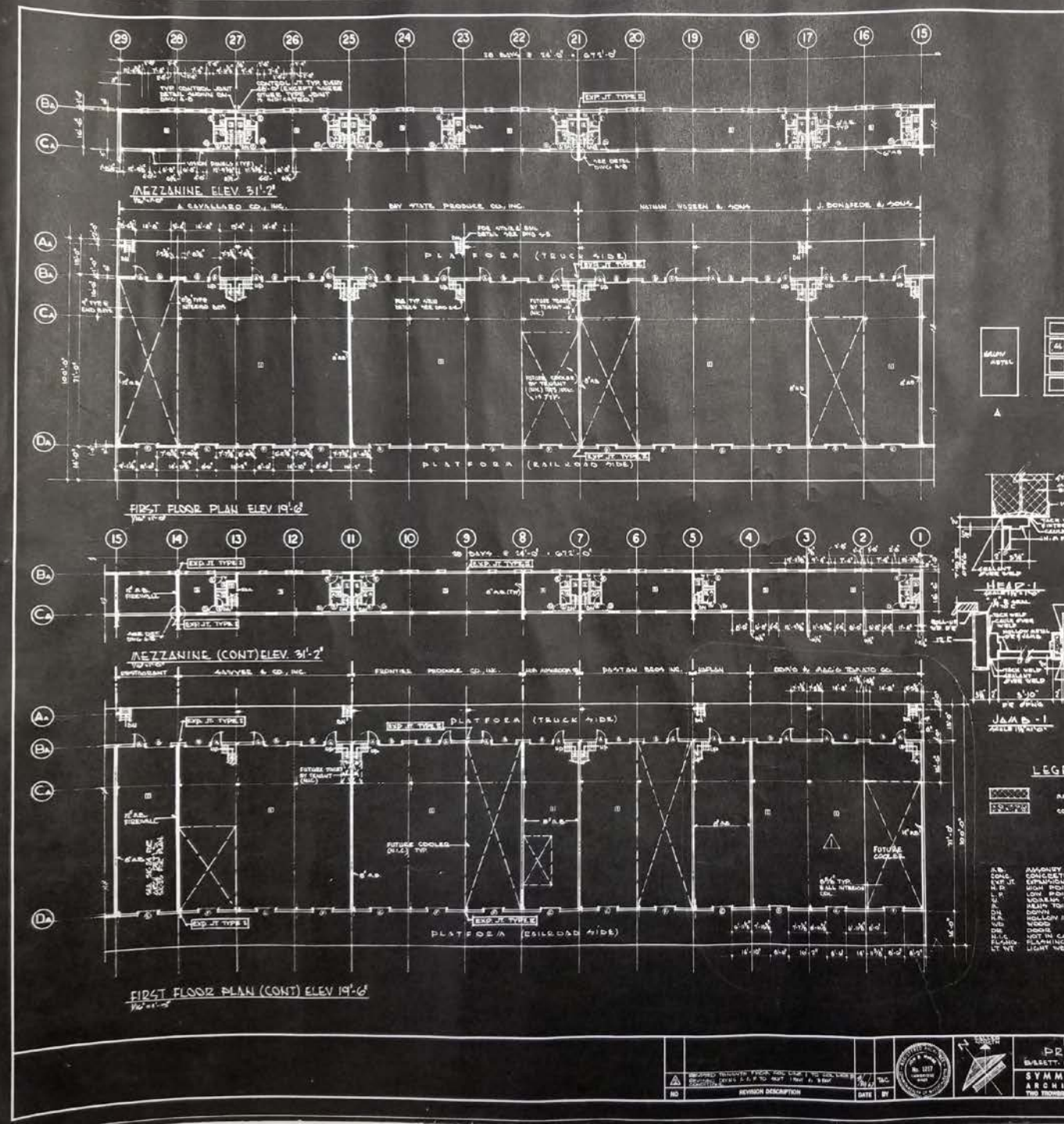
- TOTAL HOUSING CAPACITY**
- STORAGE: 207,811 SF (647)
 - OFFICE AREA: 98,530 SF (27)
 - OFFICES: 13,689 SF (97)
 - ANCILLARY: 6,208 SF (10)
 - AGGREGATION/DOCK: 6,208
- PARKING CAPACITY**
- 35 - 33' TRUCKS
 - 25 - 33' TRUCKS
 - 305 - PASSENGER VEHICLES
 - 8 - HANDICAP PASSENGER V.



Wholesale Market

Technical Request

- Site Visit
- Catalog Original Documents
- Survey Existing Building Conditions
- Review Building Compliance
- Develop 3D Building Models
- Provide Architectural Drawings
 - Floor Plans
 - Building Sections
 - 3D Renderings





Wholesale Markets & Facility Design

NOT FOR CONSTRUCTION
This drawing is a preliminary design and is not intended for construction. It is provided as a guide only and is subject to change without notice. It is not a contract document and does not constitute an offer. The design is preliminary and is subject to change without notice. It is not a contract document and does not constitute an offer. The design is preliminary and is subject to change without notice. It is not a contract document and does not constitute an offer.

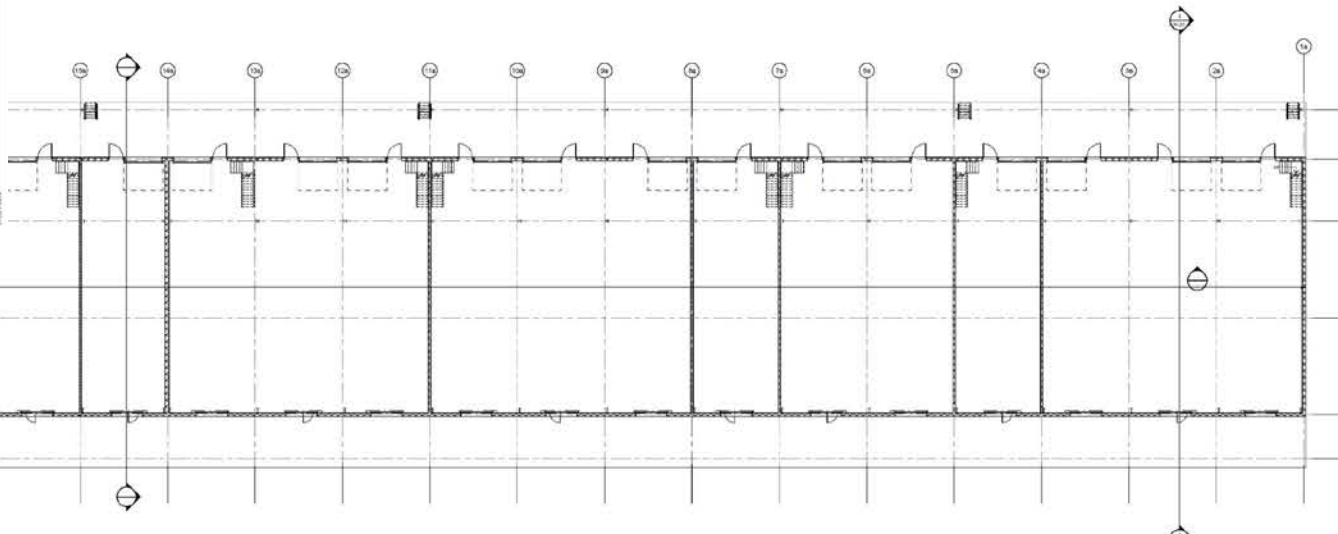
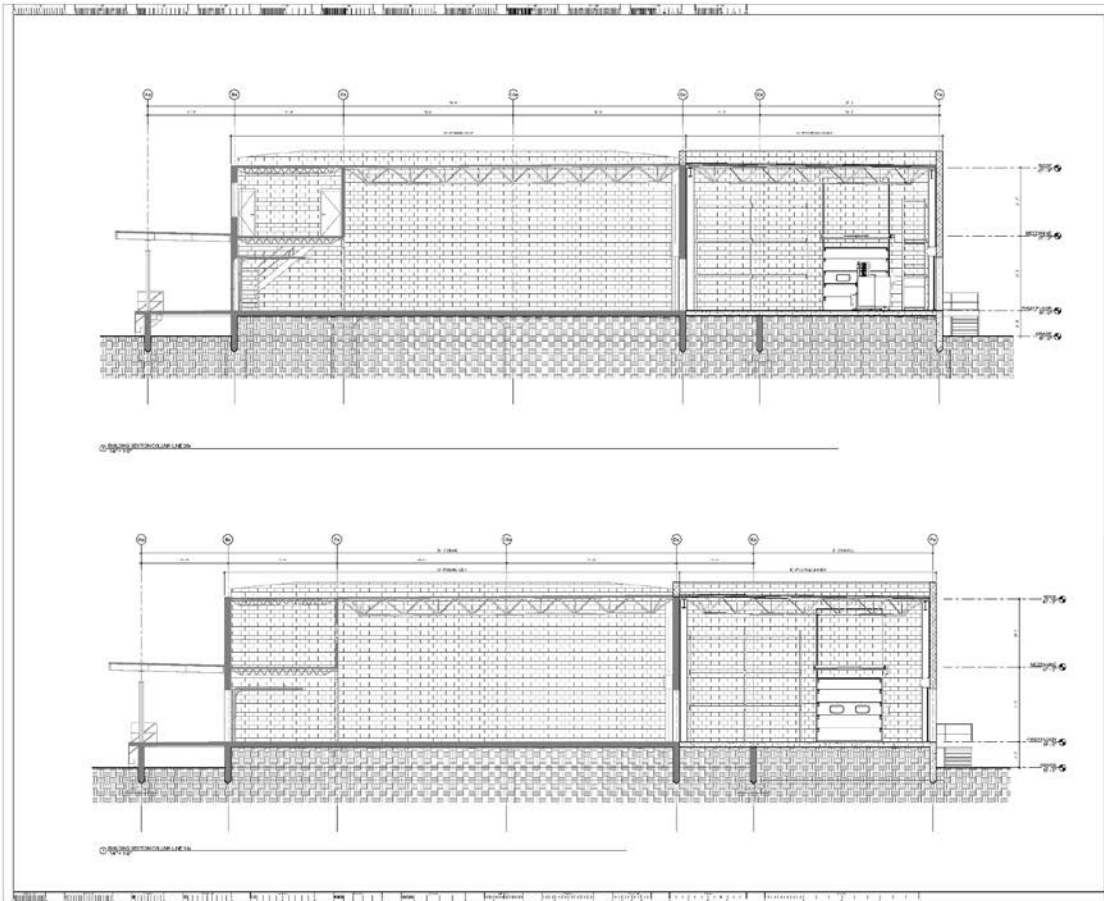
PRELIMINARY
Preliminary Design

No.	Revised	Date

New England Produce Center

Project Engineer
D. [Name]
Professional Seal and Stamp

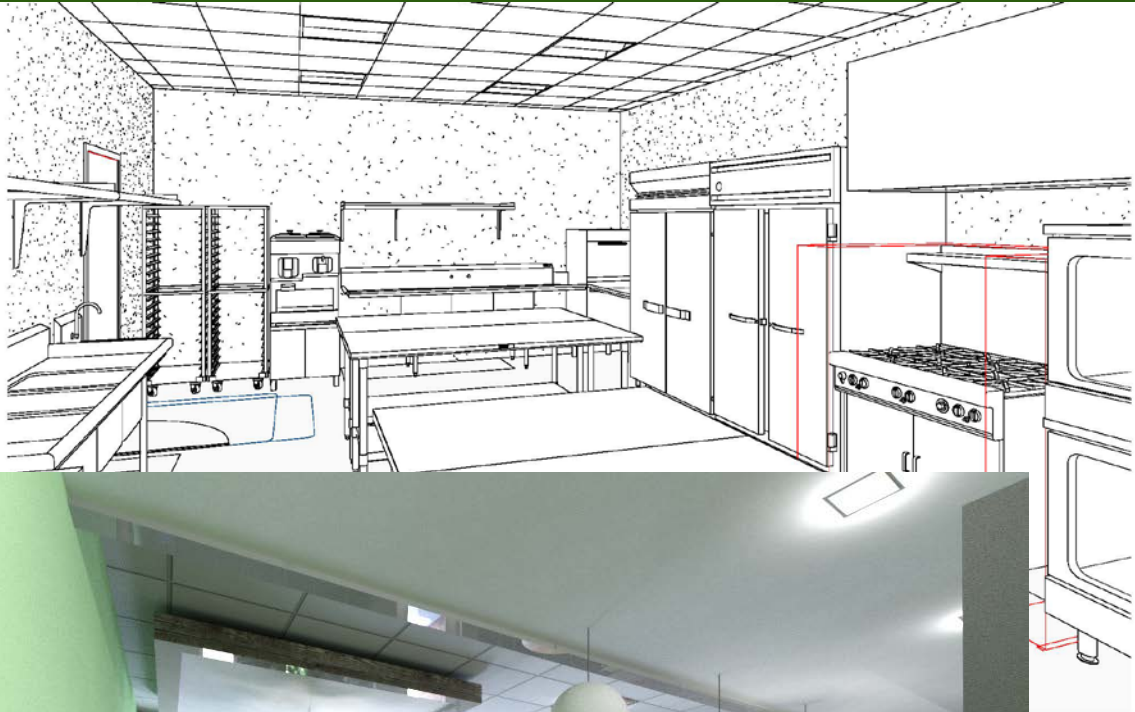
Sheet No.
A04.02-A

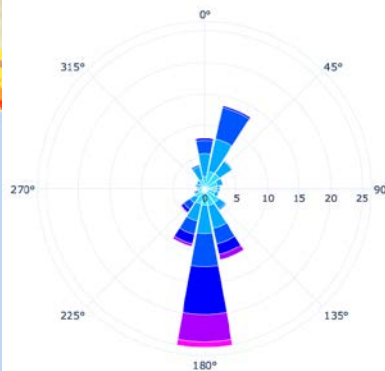
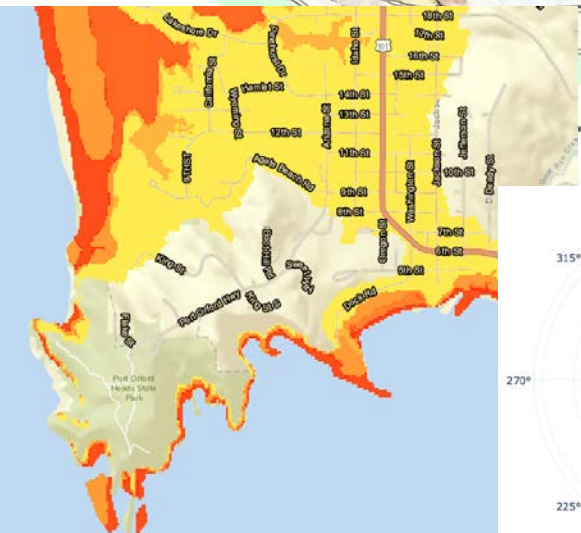
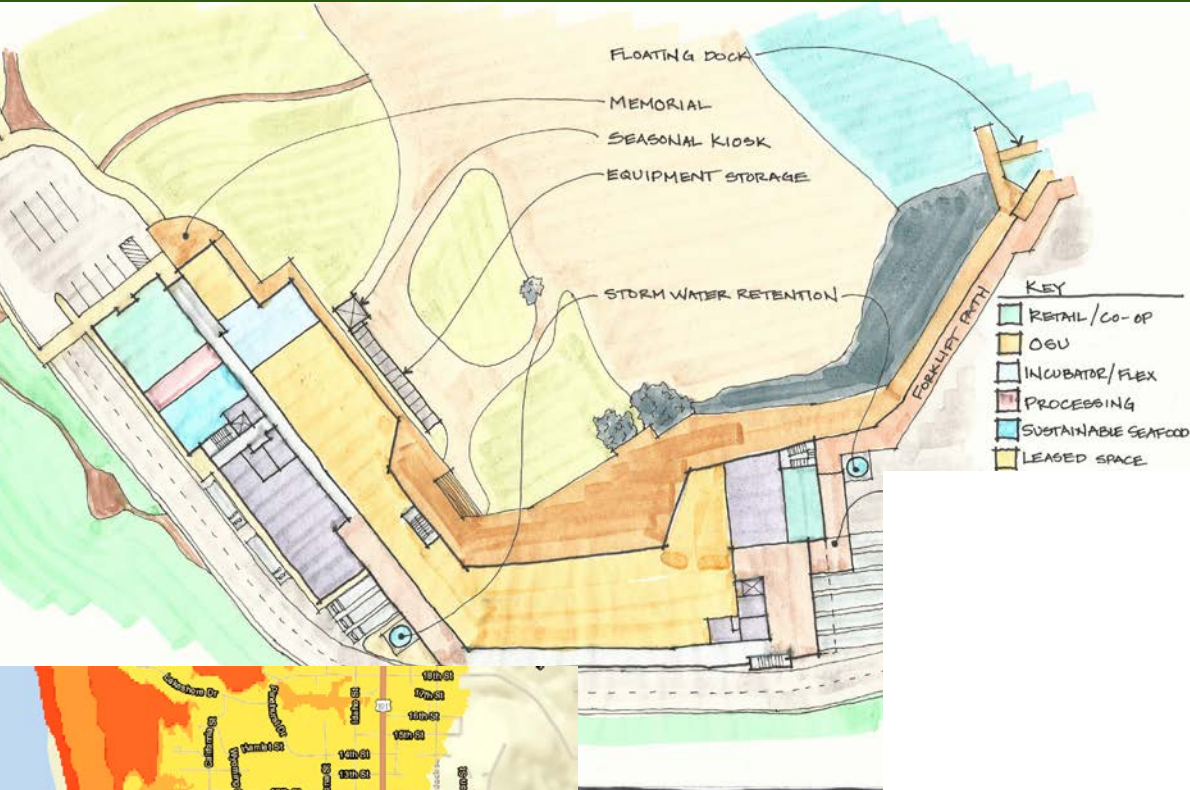




Community Food Systems

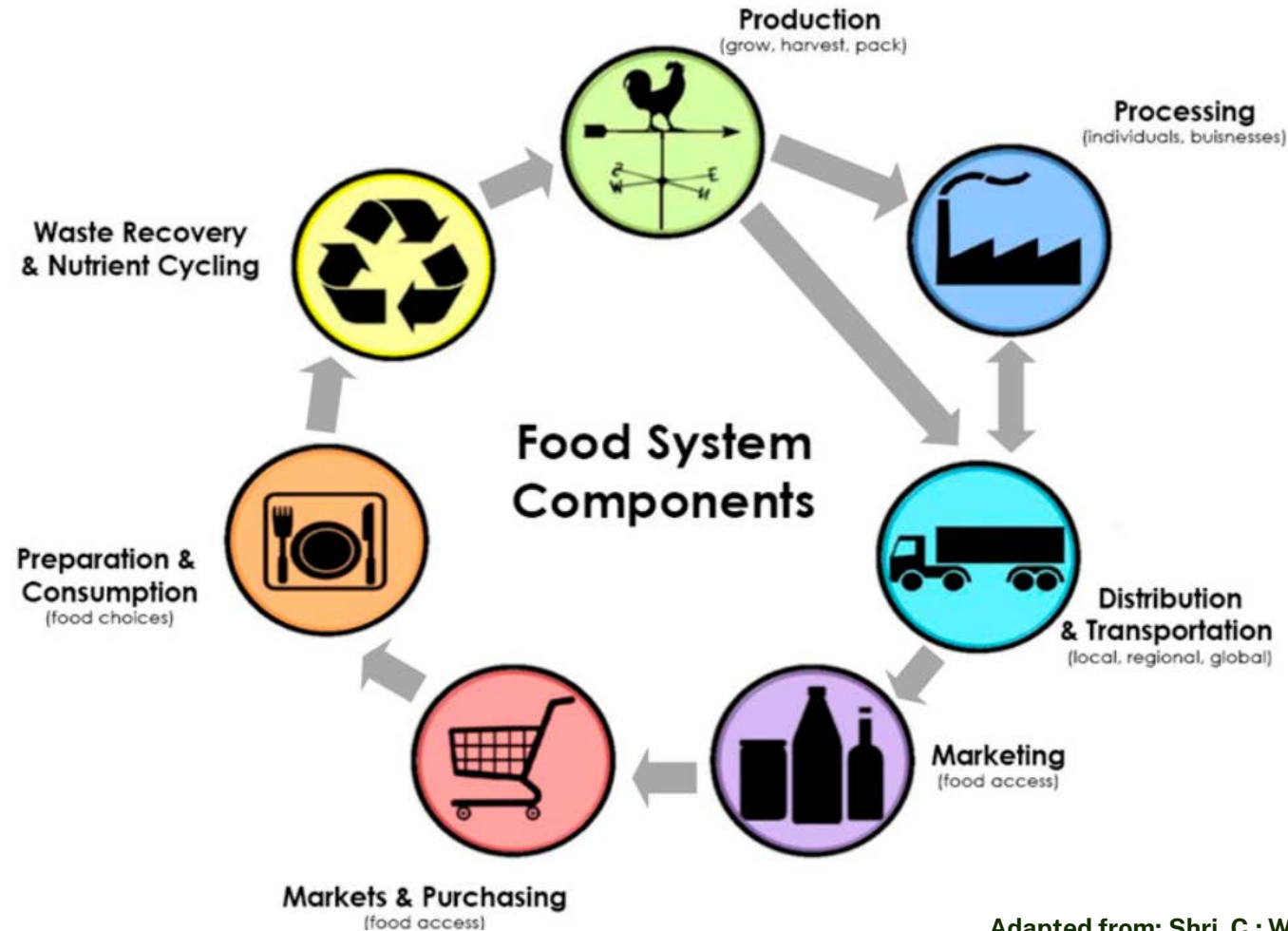








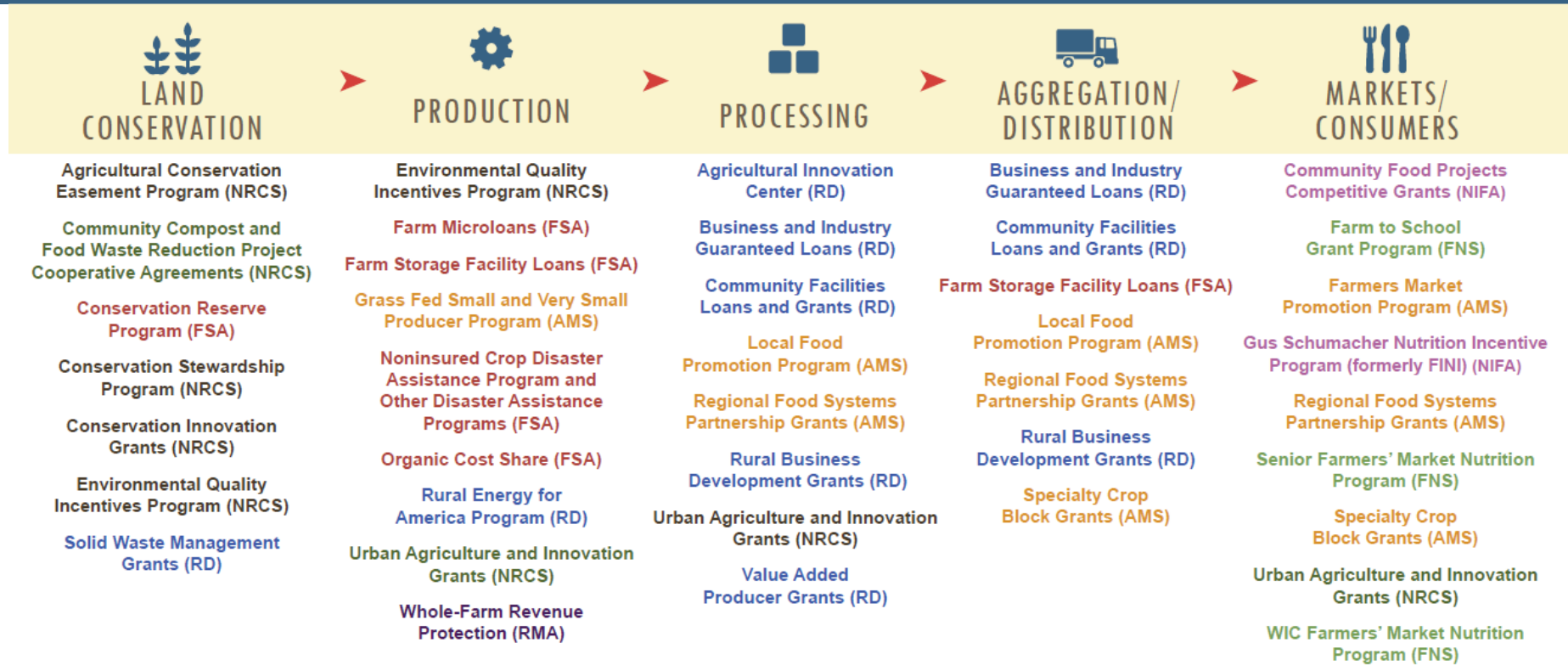
Local and Regional Food Systems





USDA PROGRAMS IN THE LOCAL FOOD SUPPLY CHAIN

USDA is committed to supporting robust regional food economies across the food chain through the programs noted below.



RESEARCH, EDUCATION, AND TECHNICAL ASSISTANCE PROGRAMS ALONG THE SUPPLY CHAIN

Agriculture and Food Research Initiative (NIFA)

Beginning Farmer and Rancher Development Program (NIFA)

Community Prosperity Funding Opportunity (OPPE)

Conservation Technical Assistance (NRCS)

Enhancing Agricultural Opportunities for Military Veterans (AGVETS) (NIFA)

Extension Risk Management (NIFA)

Federal State Marketing Improvement Program (AMS)

Food Safety Outreach Program (NIFA)

Organic Research & Extension Initiative (NIFA)

Outreach and Assistance for Socially Disadvantaged and Veteran Farmers and Ranchers Program (2501 Program) (OPPE)

Rural Cooperative Development Grants (RD)

Small Business Innovation Research (NIFA)

Socially Disadvantaged Group Grant (RD)

Specialty Crop Block Grants (AMS)

Specialty Crop Research Initiative (NIFA)

Sustainable Agriculture Research and Education Program (NIFA)



Agricultural Marketing Service
U.S. DEPARTMENT OF AGRICULTURE





Agricultural Marketing Service
U.S. DEPARTMENT OF AGRICULTURE



Thank you



Ron Batcher, AIA – USDA
ronald.batcher@usda.gov