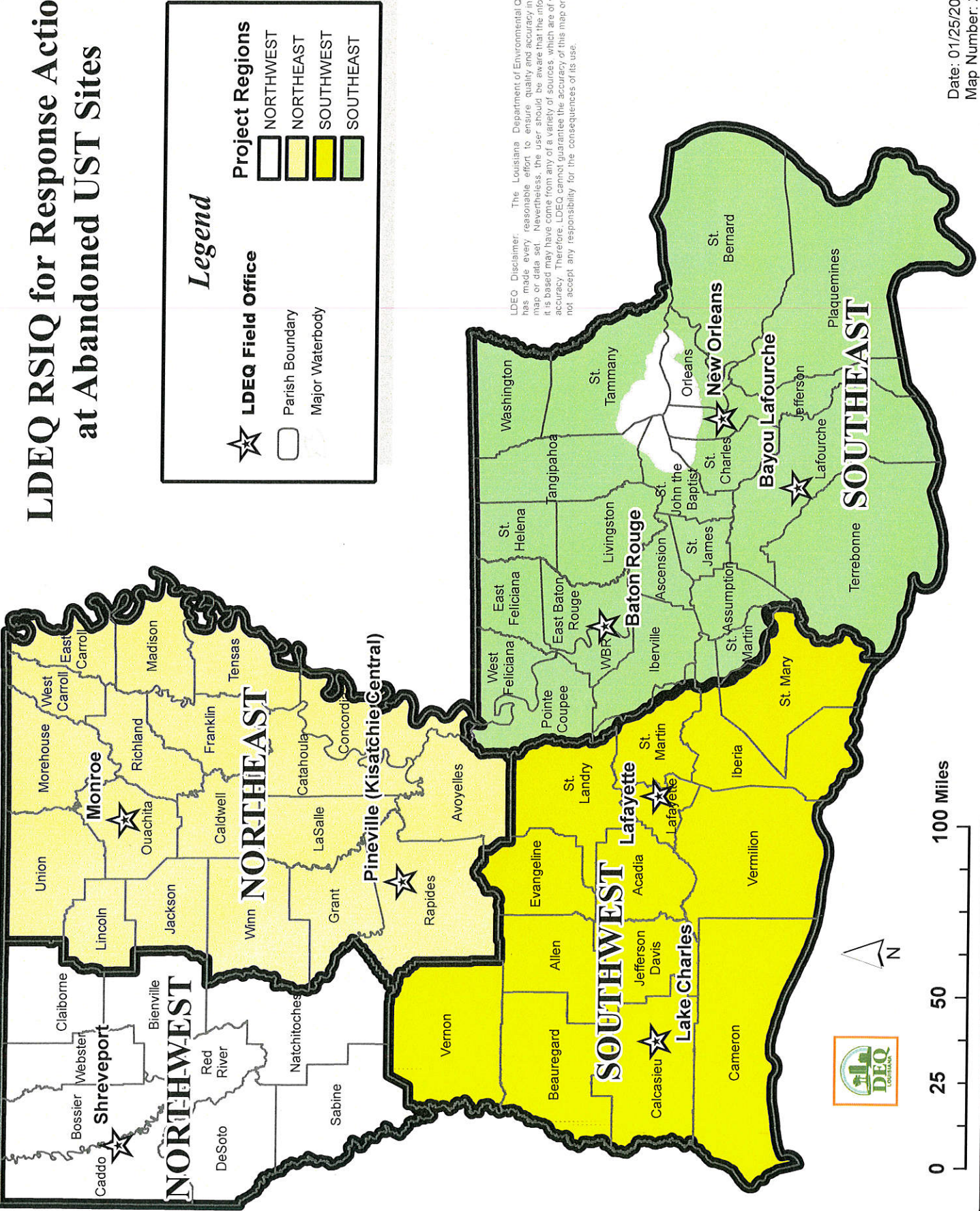


LDEQ RSIQ for Response Actions at Abandoned UST Sites



Legend

- ★ LDEQ Field Office
- Parish Boundary
- ▭ Major Waterbody
- Project Regions
 - NORTHWEST
 - NORTHEAST
 - SOUTHWEST
 - SOUTHEAST

LDEQ Disclaimer: The Louisiana Department of Environmental Quality (LDEQ) has made every reasonable effort to ensure quality and accuracy in producing this map or data set. Nevertheless, the user should be aware that the information on which it is based may have come from any of a variety of sources, which are of varying degrees of accuracy. Therefore, LDEQ cannot guarantee the accuracy of this map or data set, and does not accept any responsibility for the consequences of its use.

